

# GPS-BASED MOBILE WORKER SAFETY APPLICATION



## Protect who matters most™

### Features

- Affordable safety solution consisting of a mobile software application and LonerPortal web monitoring application
- Compatible with all GPS-base BlackBerry® smartphones
- Mobile worker can request immediate emergency assistance with the press of a hot-key
- Convenient mobile worker check-in process
- Team Member protection and Team Leader mobile monitoring modes
- Scheduled GPS publishing ensures current location is available
- Compatible with BlackLine's LonerGPS™ dedicated safety device and LonerPortal™ web monitoring infrastructure

BlackLine GPS delivers the world's most effective mobile worker protection system.

BlackLine's LonerMobile™ application for BlackBerry® smartphones is the easiest way to provide a safe work environment for mobile workers. LonerMobile leverages BlackLine's safety platform, LonerPortal™, and the high-performance GPS technology built into BlackBerry smartphones.

Using a multi-layered approach to safety, LonerMobile provides employers with visibility of threats to mobile worker's safety and the tools to respond efficiently.



Safety layers include:

- 1. Missed check-in alert:** LonerMobile's first layer of protection requires the mobile worker to respond to a periodic check-in request. If a worker fails to respond, the system notifies safety monitoring personnel immediately. A missed check-in automatically reports a GPS location to LonerPortal.
- 2. GPS location reporting:** In the event of an emergency, the mobile worker's last-reported location is quickly available from BlackLine's LonerPortal Web interface.
- 3. Panic alert:** LonerMobile offers a convenient hot-key for emergency notification to your monitoring staff. Sending a panic alert automatically reports a GPS location to LonerPortal.

**About BlackLine GPS:** We engineer solutions that combine wireless technology and GPS to protect people, increase location-based awareness, and provide convenient interfaces to geographically connect people together. BlackLine GPS is a member of the BlackBerry ISV Alliance.

# Loner MOBILE™

Protect who matters most™

## Benefits

- Quickly find workers that are in trouble
- Improve response time in emergency situations
- Reduce mobile workers' anxiety about safety
- Affordable safety for both small & medium businesses and enterprise
- Minimal training for mobile workers
- Easy activation and configuration within the BlackLine GPS™ LonerPortal™ web application

## Specifications

### Smartphone compatibility

- BlackBerry OS: 4.2.1+
- GPS required for Team Member mode

### Wireless coverage

- Most countries

### Operating modes

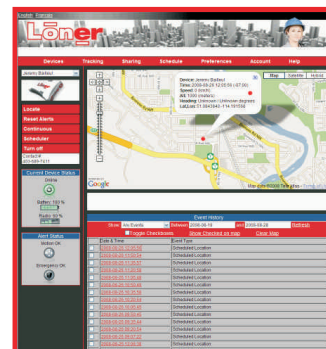
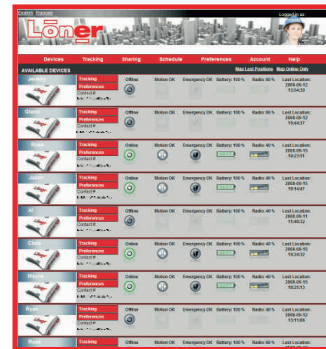
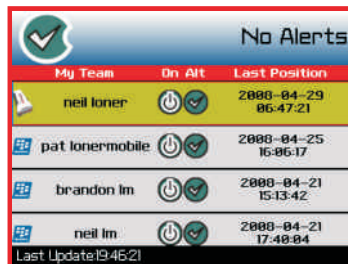
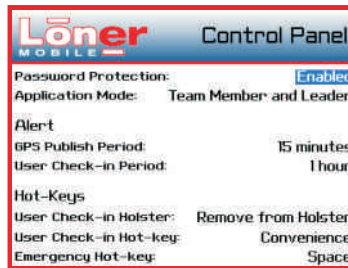
- Team Member: mobile worker protection
- Team Leader: mobile monitoring interface
- Hybrid Team Member & Leader: mobile monitoring interface for staff who also require monitoring while in the field

### Configurable timers

- Configurable GPS location publishing period: 10, 15, 30, & 60 (min)
- Configurable user check-in period: 15 minutes, 20, 30, 45, & 60 (min)

### Hot-keys

- User check-in using BlackBerry holster: Yes
- User check-in hotkey: configurable
- Emergency hotkey: configurable



LonerPortal web monitoring screenshots

LonerMobile safety application screenshots

### Safety alerts & notifications

- Safety Alerts: No user check-in, emergency
- Notifications: Low battery, no wireless connection

### Location data

- Location (lat. & long.), speed, direction of travel, time, date

### Alert data:

- Alert location (lat. & long.), alert type, time, and date
- Alert reset: user name

### User notification

- Ring-tone and vibration motor: notifies mobile worker of missed check-in

### LonerPortal

- A hosted, web-based safety monitoring application
- No software installation and no software maintenance fees
- Easy account management
- Mobile alerting and notifications through email and text message

Contact your authorized BlackLine GPS Dealer

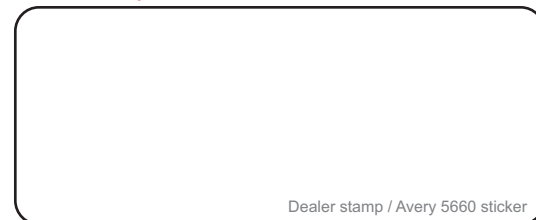


Protect. Share. Connect.™

### Contact BlackLine GPS

For further details about LonerMobile, please contact us today.

Email: sales@blacklinegps.com  
Phone: +1-866-859-4118



Dealer stamp / Avery 5660 sticker